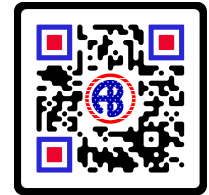


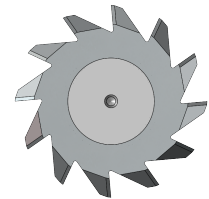
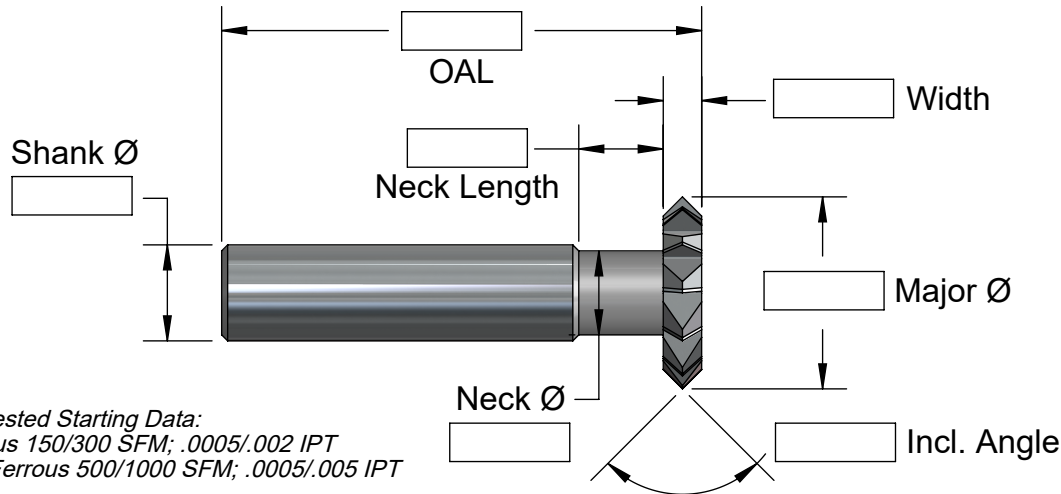
Solid Carbide TOP & BOTTOM Chamfer Cutters

Specials in 4-6 Working Days

Machining what part material, please? _____



Request For Quote



Suggested Starting Data:
 Ferrous 150/300 SFM; .0005/.002 IPT
 Non-Ferrous 500/1000 SFM; .0005/.005 IPT

| Number | Major Ø | Width | Neck Ø | Neck Length | Incl. Angle | Shank Ø & OAL | No. of Flutes | Price | |
|-------------|---------|-------|---------|-------------|-------------|---------------|---------------|---------|--------|
| | | | | | | | | No-Coat | AlTiN |
| CCD-187-90 | .187 | .060 | .115 | .38 | 90° | 3/16" X 2.0 | 4 | \$73. | \$77. |
| CCD-250-90 | .250 | .090 | .150 | .44 | 90° | 1/4" X 2.0 | 4 | \$85. | \$89. |
| CCD-375-90 | .375 | .110 | .250 | .50 | 90° | 3/8" X 2.5 | 6 | \$110. | \$117. |
| CCD-500-90 | .500 | .125 | .350 | .68 | 90° | 1/2" X 2.5 | 6 | \$130. | \$139. |
| CCD-625-90 | .625 | .140 | As Cast | | 90° | 1/2" X 2.5 | 8 | \$165. | \$175. |
| CCD-750-90 | .750 | .170 | As Cast | | 90° | 1/2" X 2.5 | 10 | \$180. | \$192. |
| CCD-100-90 | 1.00 | .200 | As Cast | | 90° | 1/2" X 2.5 | 12 | \$210. | \$224. |
| CCD-187-60 | .187 | .030 | .115 | .38 | 60° | 3/16" X 2.0 | 4 | \$73. | \$77. |
| CCD-250-60 | .250 | .045 | .150 | .44 | 60° | 1/4" X 2.0 | 4 | \$85. | \$89. |
| CCD-375-60 | .375 | .060 | .250 | .50 | 60° | 3/8" X 2.5 | 6 | \$110. | \$117. |
| CCD-500-60 | .500 | .075 | .350 | .68 | 60° | 1/2" X 2.5 | 6 | \$130. | \$139. |
| CCD-625-60 | .625 | .090 | As Cast | | 60° | 1/2" X 2.5 | 8 | \$165. | \$175. |
| CCD-750-60 | .750 | .150 | As Cast | | 60° | 1/2" X 2.5 | 10 | \$180. | \$192. |
| CCD-100-60 | 1.00 | .200 | As Cast | | 60° | 1/2" X 2.5 | 12 | \$210. | \$224. |
| CCD-187-120 | .187 | .060 | .115 | .38 | 120° | 3/16" X 2.0 | 4 | \$73. | \$77. |
| CCD-250-120 | .250 | .090 | .150 | .44 | 120° | 1/4" X 2.0 | 4 | \$85. | \$89. |
| CCD-375-120 | .375 | .110 | .250 | .50 | 120° | 3/8" X 2.5 | 6 | \$110. | \$117. |
| CCD-500-120 | .500 | .125 | .350 | .68 | 120° | 1/2" X 2.5 | 6 | \$130. | \$139. |
| CCD-625-120 | .625 | .140 | As Cast | | 120° | 1/2" X 2.5 | 8 | \$165. | \$175. |
| CCD-750-120 | .750 | .170 | As Cast | | 120° | 1/2" X 2.5 | 10 | \$180. | \$192. |
| CCD-100-120 | 1.00 | .200 | As Cast | | 120° | 1/2" X 2.5 | 12 | \$210. | \$224. |



A. B. TOOLS, INC.
 1051 Aviation Blvd.
 Lincoln, CA 95648-9312

Phone 916 408-2442
 FAX 916 993-3949

www.abtoolsinc.com
 E-Mail: mail@abtoolsinc.com