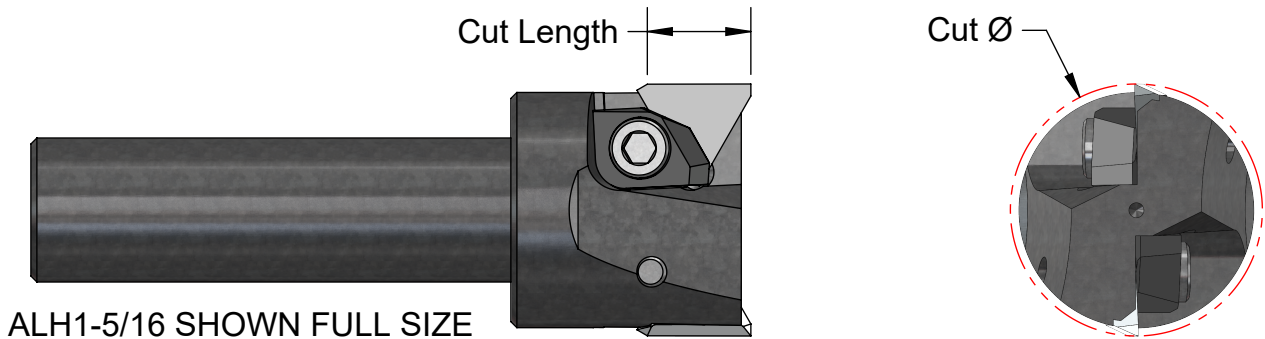
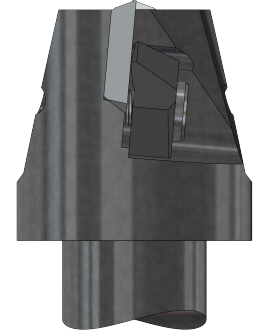


The Aluma-Hogs



We started making ALUMA-HOGS in 1982. In 1997 we introduced the SHEAR-HOG; see back cover. With its high shear inserts, and no top clamps, the SHEAR-HOG outperforms the ALUMA-HOGS by 50% in Metal Removal rates. We will stock Aluma-Hogs, inserts, and parts as long as needed.



NUMBER	Cut Ø	Shank Ø	OAL	Cut Length	Insert & Qty.	Clamp	Shim	Price Incl. Inserts
ALH1A	1.0	3/4"	3.75	.25	TEG2.522 (2)	CL1		\$240.
ALH1B	1.0	1"	3.75	.25	TEG2.522 (2)	CL1		\$240.
ALH1-5/16	1.312	3/4"	3.75	.50	TFG32MF (2)	CL2		\$295.
ALH1-7/8A	1.875	3/4"	3.87	.75	TEG42MF (2)	CL3		\$315.
ALH1-7/8B	1.875	1"	4.12	.75	TEG42MF (2)	CL3		\$315.
ALH2	2.0	1"	4.12	.75	TEG42MF (2)	CL3		\$360.
ALH3S	3.0	1"	4.12	.75	TEG42MF (3)	CL3	SM37	\$455.
ALH4S	4.0	1"	4.25	.75	TEG42MF (4)	CL3	SM37	\$590.

Inserts/Hardware	Relief Angle	Price
TEG2.522 (.031 R)	20°	\$14.00
TEG2.52MF (Mill Flat)	20°	\$16.00
TFG322 (.031 R)	25°	\$14.00
TFG32MF (Mill Flat)	25°	\$16.00
TEG422 (.031 R)	20°	\$17.00
TEG42MF (Mill Flat)	20°	\$19.00
CL1 or CL2 Clamp		\$18.50
CL3 Clamp		\$24.00
SM37 Shim, Modified		\$18.00

*Suggested Starting Data:
Non-Ferrous ONLY
500/2,000 SFM; .002/.010 IPT
10,000 max RPM*

See pages 67 & 71 for information on the SHEAR-HOG, which will rough mill Aluminum at 6 CIM per HP.

Screws included with any Clamp/Shim orders.



A. B. TOOLS, INC.
1051 Aviation Blvd.
Lincoln, CA 95648-9312

Phone 916 408-2442
FAX 916 993-3949

www.abtoolsinc.com
E-Mail: mail@abtoolsinc.com