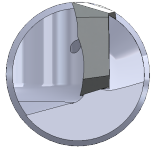
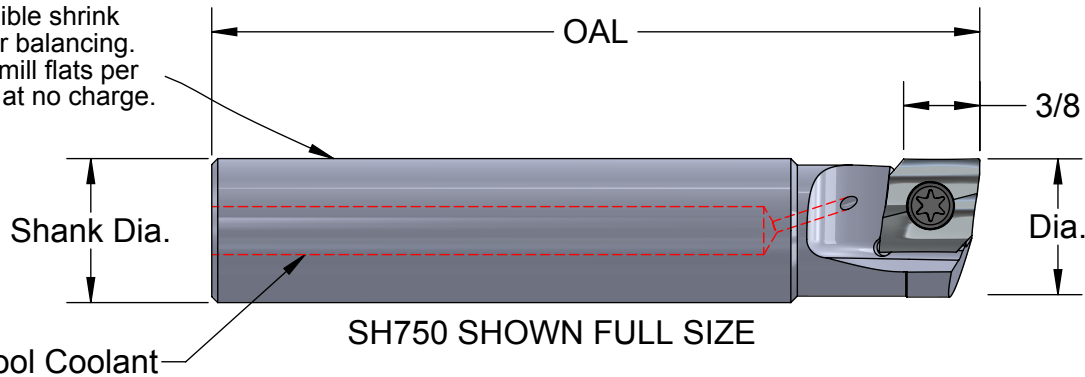


Single Flute Shear-Hog®

The Shear-Hogs have no set-screw flats for possible shrink fit use or balancing. We will mill flats per request at no charge.



Number	Dia.	Shank Dia.	OAL	No. of Flutes	Ramp Angle	Price
SH750	.750	3/4	4.0	1	Drills in Z!	\$195.
SH750-6	.750	3/4	6.0	1	Drills in Z!	\$240.
SH750-9	.750	3/4	9.0	1	Drills in Z!	\$300.
SH787	.787 20MM	3/4	4.0	1	Drills in Z!	\$195.
SH787-6	.787 20MM	3/4	6.0	1	Drills in Z!	\$240.
SH875	.875	3/4	4.0	1	Drills in Z!	\$195.
SH875-6	.875	3/4	6.0	1	Drills in Z!	\$240.
SH984	.984 25MM	3/4	4.0	1	Drills in Z!	\$195.
SH984-6	.984 25MM	3/4	6.0	1	Drills in Z!	\$240.
SH100	1.0	3/4	4.0	1	Drills in Z!	\$195.
SH100-6	1.0	3/4	6.0	1	Drills in Z!	\$240.
SH100-9	1.0	3/4	9.0	1	Drills in Z!	\$300.

All cutter prices include Inserts, Screws, and Wrench, assembled and ready to cut.

See page 50 for recent test results on a HAAS VF1

Shear-Hog Inserts	Corner	Price
ADEH-431	.010 R	\$18.75 ea.
ADEH-432	.030 R	\$18.75 ea.
ADEH-434	.060 R	\$18.75 ea.
ADEH-436	.090 R	\$20.50 ea.
ADEH-438	.120 R	\$20.50 ea.
ADEH-45	.015 x 45°	\$20.50 ea.

Extra Insert Features	Add to Price
.002 Honed Edge	\$3.00
AlTiN Coat	\$4.00
DLC Coat	\$5.50
Honed Edge & AlTiN Coat	\$7.00
Insert Screws and Wrench	
3.5mm-SH (2012 and newer)	\$1.75 ea.
8-32-SH (Older than 2012)	\$1.75 ea.
T15 Wrench	\$7.50 ea.

Are you rough milling aluminum at 6 CIM per HP?



Phone 916 408-2442 FAX 916 408-0740

A. B. TOOLS, INC.
1051 Aviation Blvd.
Lincoln, CA, 95648-9312

If any product is not satisfactory
we will modify, replace or refund.

Toll free phone 866 440-8665

www.abtoolsinc.com
E-Mail: mail@abtoolsinc.com