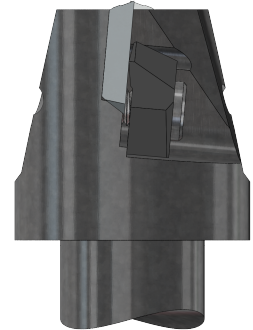
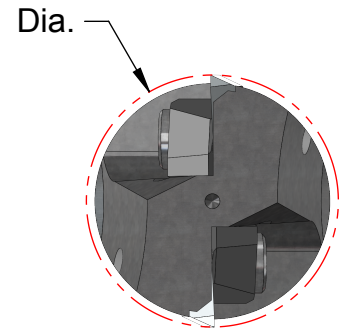
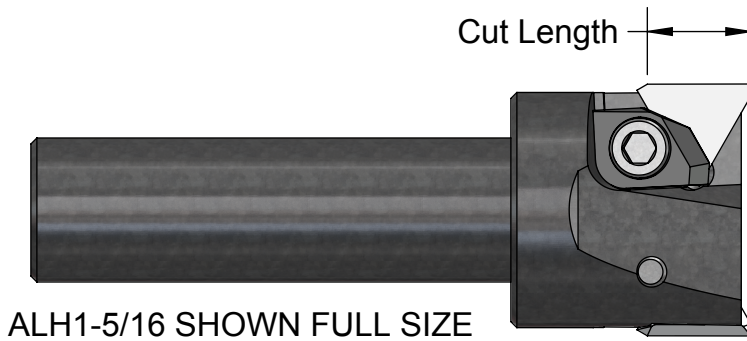


The Aluma-Hogs



We started making ALUMA-HOGS in 1982. In 1997 we introduced the SHEAR-HOG; see back cover. With its high shear inserts, and no top clamps, the SHEAR-HOG outperforms the ALUMA-HOGS by 50% in Metal Removal rates. We will stock Aluma-Hogs, inserts, and parts as long as needed.

NUMBER	Dia.	Shank Dia.	OAL	Cut Length	Insert & Qty.	Clamp	Shim	Price Incl. Inserts
ALH1A	1.0	3/4	3.75	1/4	TEG2.522 (2)	CL1		\$195.
ALH1B	1.0	1.0	3.75	1/4	TEG2.522 (2)	CL1		\$195.
ALH1-5/16	1.312	3/4	3.75	1/2	TEG32MF (2)	CL2		\$245.
ALH1-7/8A	1.875	3/4	3.87	3/4	TEG42MF (2)	CL3		\$260.
ALH1-7/8B	1.875	1.0	4.12	3/4	TEG42MF (2)	CL3		\$260.
ALH2	2.0	1.0	4.12	3/4	TEG42MF (2)	CL3		\$295.
ALH3S	3.0	1.0	4.12	3/4	TEG42MF (3)	CL3	SM37	\$380.
ALH4S	4.0	1.0	4.25	3/4	TEG42MF (4)	CL3	SM37	\$495.

Inserts/Hardware	Relief Angle	Price
TEG2.522 (.031 R)	20°	\$11.00
TEG2.52MF (Mill Flat)	20°	\$12.50
TFG322 (.031 R)	25°	\$11.00
TFG32MF (Mill Flat)	25°	\$12.50
TEG422 (.031 R)	20°	\$13.25
TEG42MF (Mill Flat)	20°	\$15.50
CL1 or CL2 Clamp		\$15.00
CL3 Clamp		\$20.00
SM37 Shim, Modified		\$15.00

Suggested Starting Data:
Non-Ferrous ONLY
500/10,000 SFM; .002/.010 IPT

See back cover, inside back cover and page 50 for information on the SHEAR-HOG, which will rough mill Aluminum at 6 CIM per HP.

Screws included with any Clamp/Shim orders.

Phone 916 408-2442 FAX 916 408-0740

Toll free phone 866 440-8665



A. B. TOOLS, INC.
 1051 Aviation Blvd.
 Lincoln, CA, 95648-9312

If any product is not satisfactory
 we will modify, replace or refund.

www.abtoolsinc.com
 E-Mail: mail@abtoolsinc.com